

HP Designjet Z2100 Photo Printer series



BREAKTHROUGH COLOR: Achieve consistent & accurate color with the first ever embedded spectrophotometer¹ with i1 color technology

- **Automated and simple creation of ICC profiles.** HP's embedded spectrophotometer with i1 color technology and an automated workflow bring simplicity and reliability to accurate profiling and precise printer calibration. HP's Advanced Profiling Solution offers additional options for profiling and calibrating your printing system.
- **Expect consistent color from print to print.** Calibrate the printer and begin delivering print-to-print and printer-to-printer color repeatability.
- **Broad gamut coverage:** Over 80% PANTONE® coverage², and full compliance with prepress standards: SWOP, ISO, GRACOL, EUROSCALE, TOYO, FOGRA, and 3DAP.

TRUE CREATIVE EXPRESSION: Get vivid, long-lasting quality with an 8-ink printing system with HP Vivera pigment inks

- **Create a lasting impression:** HP 70 Vivera pigment inks with an 8-ink printing system achieve a unique combination of consistently outstanding image quality. Water resistant prints resist fading for over 200 years³ on a variety of HP creative and specialty media for your photos, posters, presentations and maps.
- **Rich, dark blacks on matte and glossy papers without swapping cartridges.** The HP Three-Black ink set consists of matte black, photo black, and light gray HP Vivera pigment ink cartridges that reside in the printer at all times.
- **Achieve consistent results on a wide range of papers.** Choose from a variety of HP papers from plain to glossy, including backlit, indoor banner, and other commercially available papers.

TRUE PRINT CONFIDENCE: Print with greater confidence thanks to dependable HP technologies

- **Eliminate trial and error with real-time layout and orientation preview.** Take the guess-work out of margins. Save time and materials.
- **Glide effortlessly through color management and printing** with the HP Color Center tool.
- **Save time with HP Easy Printer Care/HP Printer Utility software.** Monitor the status of printers & supplies and get the latest updates.
- **Expect always-on quality** with automatic servicing routines that are economical and convenient thanks to proactive printhead maintenance.
- **Have your questions answered.** Application settings and color management consultation at your finger tips with the HP Knowledge Center.

¹ In a drop-on-demand inkjet large format printer of its category.

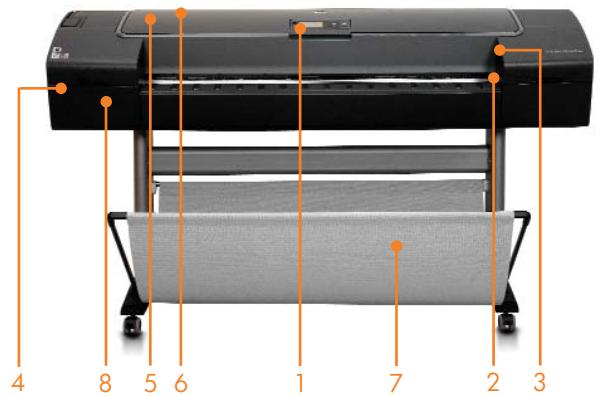
² HP's preliminary, internal results have shown that the HP Designjet Z Photo Printer series is capable of successfully simulating over 80% of the PANTONE colors. HP Designjet Z2100 and Z3100 Photo Printers are pending PANTONE-licensing

³ Display permanence rating by Wilhelm Imaging Research, Inc. on a range of HP creative and specialty media. For details: <http://www.hp.com/go/supplies/printpermanence>

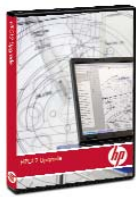
HP Designjet Z2100 Photo Printer series

1. LCD front panel and direct access keys for ink supply maintenance and print message alerts.
2. Front bypass slot accommodates media up to 24 in/610 mm wide (24" printer) or up to 44 in/1117 mm (44" printer)
3. Mounted on the carriage, the embedded spectrophotometer brings accurate profiling and precision color calibration
4. Rear USB 2.0 High Speed and 10/100 BT Ethernet connection for TCP/IP. Additional free slot for optional network connectivity with 1 EIO HP Jetdirect card
5. Rear bypass slot handles heavy and rigid media of weights up to 500 g/m² and thickness up to 0.8 mm.
6. Roll feed (located at the back of the printer) feeds rolls up to 24 in/610 mm wide (for 24" printer) or up to 44 in/1117 mm (for 44" printer) and 300 ft/91 m long
7. Media bin *
8. 8 HP Vivera pigment ink set with 4 pl & 6 pl drop size for prints that resist fading for over 200 years³

*Not included in the box in Asia Pacific for 24" model



OPTIONAL ACCESSORIES



The HP-GL/2 Upgrade Kit improves line quality and network availability with the HP-GL/2 software key. The printer -rather than the computer- processes files for improved operating efficiency. Store and reprint files from the printer queue and print legacy HP-GL/2 files.



The HP Advanced Profiling Solution, powered by GretagMacbeth™ technology, offers a powerful, automated, and cost effective color management system that works seamlessly with the HP embedded spectrophotometer. It enables an easy-to-use yet sophisticated end-to-end calibrated and color managed workflow that saves you time and money and eliminates the hassle of off-line measurement devices. Also included in the box is a monitor calibrator.

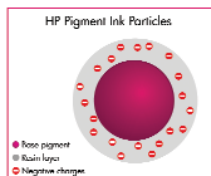


The EFI Designer Edition 5.1 XL for HP is a powerful, yet cost effective digital proofing system that allows full control over digital proofing needs. Together, EFI and HP enable designers, photographers and other creative professionals to easily generate proof-quality prints with sharp detail, color accuracy and smooth tonal transitions.



Additional 24" and 44" spindles enable professional photographers and graphic designers to easily switch between media rolls. Also available, for design professionals such as architects, engineers, and GIS specialists, is an additional 44" spindle for easy switching between technical media rolls.

KEY TECHNOLOGIES



Electrosteric Encapsulation Technology

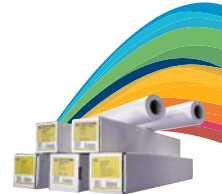
HP Vivera pigment inks offer outstanding image quality and fade resistance on a wide variety of photo and fine art media, along with water resistance on a range of HP creative and specialty media. HP's proprietary Electrosteric Encapsulation Technology optimizes the pigment chemistry and ink properties for stability and performance to ensure a broad color gamut, print permanence, excellent gloss uniformity, and reliable, accurate, and consistent printing.



HP's 8-ink printing system, which is made up of the exclusive HP Vivera pigment ink formulation technology and the HP Three-Black Ink set, ensures exceptional color accuracy and consistency: a valuable tool for graphic designers and prepress professionals who need repeatable results.



The HP embedded spectrophotometer with i1 Color Technology from GretagMacbeth is mounted on the printer carriage and revolutionizes professional color workflows by automating media profiling. It allows users to automatically generate custom RGB ICC profiles for their preferred media and provides accurate measurements for printer calibration that delivers print-to-print and printer-to-printer color consistency. Also, with the optional HP Advanced Profiling Solution, you can edit and modify existing profiles and create CMYK profiles.



An extensive media portfolio: HP offers a portfolio of 9 photo papers, 10 digital fine art papers, 3 proofing papers, 9 bond and coated papers, and over 30 other HP media. All have been tested with HP 70 Vivera pigment inks to deliver consistent, museum-quality prints that withstand the demands of handling, display and storage expected of professional prints.

SERVICES

The HP Start-up kit, HP Knowledge centre, and HP Easy Printer Care (Windows®)/Printer Utility (Mac®) are all complimentary services provided by HP to assist you during installation and throughout your printing workflow; visit www.hp.com/go/graphic-arts for full details. For enhanced services purchase from the HP Professional Graphic Services portfolio, which includes:

- **HP Installation Care Pack Services:** Easier to get your printer up and running in minimum time. Stand alone and network options available.
- **The HP Color Expert Service powered by X-Rite Color Services:** Problems getting the right color from your printer? Call one phone-number for immediate, reliable answers to all of your questions on color, color management software and hardware, RIPs, design applications, output devices, drivers and operating systems.
- **HP Care Pack and Post Warranty Services:** Reduce downtime and mitigate the risk of unbudgeted repair costs. 3-5 year warranty extensions available.

See back page for ordering information and visit www.hp.com/go/pgs for more details on all options.

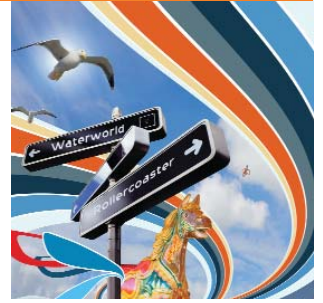
DESIGNED FOR PROFESSIONALS

GRAPHIC DESIGNERS

- Express your creativity and sell your ideas with high-impact color and black-and-white concept and packaging proofs.
- Print the desired colors from Photoshop thanks to the free HP Photosmart Pro print plug-in for Adobe Photoshop®.
- Integrate the optional EFI Designer Edition RIP 5.1 for HP (available from HP) to enable CMYK workflow support, PostScript® & PDF printing, and accurate spot color management.

«The machine creates the ICC profiles for you and does the calibration for you, which are massive issues for artists. This enables the media and inks to work together, regardless of the paper used.»

Patrick Morgan, FARM CREATIVE



PREPRESS PROOFING

- Produce accurate and stable proofs that meet prepress standards.
- Save time and money and drastically shorten your workflow thanks to automated generation of ICC profiles.
- To achieve an advanced proofing solution, integrate one of a range of commercially available proofing RIPs, such as the Kodak Matchprint Inkjet proofing solution or the Colorproof o4 RIP from GMG. These leading prepress RIPs combine with the printer to form a cost-effective solution that verifies the press-standard color compliance of your proofs.

«By combining the embedded eye-one color spectrophotometer, together with the latest printing technologies found in the new HP Designjet Z Photo Printer series, new, ground-breaking standards in large-format printing have been established, providing the industry with a new benchmark.»

Francis Lamy Executive VP and CTO X-Rite



COMMERCIAL PHOTOGRAPHY

- Create beautiful, large-format color and black-and-white exhibition prints, portfolios, and magazine proofs.
- Added to Adobe® Lightroom is a Calibrate Printer button, enabling you to launch the printer's color management tools directly from the application, the result of close collaboration between HP and Adobe.
- For advanced options integrate one of a range of commercially available photo RIPs, such as the ImagePrint v.6 RIP from ColorByte. This RIP provides advanced multiple-image placement, black-and-white split-toning, and PostScript® & PDF printing.

«The driver options are wonderful. They'll save huge amounts of paper. In the past we often got either double color management or none at all.»

Bruce Fraser, author of Real World Photoshop and Real World Color Management



DISPLAY GRAPHICS AND POSTERS

- Impress your clients, persuade colleagues, and facilitate knowledge-sharing with spectacular, long-lasting, and water-resistant posters and presentations.
- Print full-color marketing collateral, point-of-sales material, and tradeshow decoration, all with consistent colors and on a wide range of HP papers and other commercially available media.



TECHNICAL IMAGING AND MAPPING

- Produce impressive renderings and visualizations, photorealistic prints, maps, satellite images and presentation panels with superior quality, consistency, and durability.
- Architects, engineers, construction managers, industrial designers, and GIS specialists all benefit from easy, reliable, and predictable printing of high-definition technical imaging prints.



HP Designjet Z2100 Photo Printer series



Technical specifications

Print speed	
Best	15 min/page on D/A1 or up to 17 ft ² /h (color image on glossy paper) 9.8 min/page on D/A1 or up to 31 ft ² /h (color image on coated paper)
Normal	7.9 min/page on D/A1 or up to 38 ft ² /h (color image on glossy paper) 4.2 min/page on D/A1 or up to 72 ft ² /h (color image on coated paper)
Draft	5.8 min/page on D/A1 or up to 52 ft ² /h (color image on glossy paper) 2.0 min/page on D/A1 or up to 150 ft ² /h (color image on coated paper)
Resolution	
Best (Color and B&W)	2400 x 1200 optimized dpi
Normal (Color and B&W)	600 x 600 dpi
Draft (Color and B&W)	600 x 600 dpi
Memory	
	HP Designjet Z2100 24" Photo Printer: 128 MB Standard memory, 40 GB hard disk HP Designjet Z2100 44" Photo Printer: 128 MB Standard memory, 40 GB hard disk
Media	
Handling	Sheet feed, roll feed, automatic cutter (cuts all media except canvas)
Types	Photographic paper (satin, gloss, semi-gloss, matte), proofing paper (high-gloss, semi-gloss, matte), fine art printing material (canvas, smooth, textured, watercolor), self-adhesive and vinyl (polypropylene, vinyl), sign and banner (display film, banner, scrim, polypropylene, Tyvek®, outdoor paper), backlit, bond and coated (bond, coated, heavyweight coated, super heavyweight coated)
Maximum weight	500 g/m ²
Size	HP Designjet Z2100 24" Photo Printer: All standard sizes larger than Letter/A4 up to 24 in/610 mm wide HP Designjet Z2100 44" Photo Printer: All standard sizes larger than Letter/A4 up to 44 in/1117 mm wide
Maximum external roll diameter	5.3 in/136 mm
Maximum roll length	300 ft/91 m
Printing	
Margins (top x bottom x right x left)	Roll: 0.2 x 0.2 x 0.2 x 0.2 in/5 x 5 x 5 x 5 mm (full bleed available on glossy roll media) Sheet: 0.2 x 0.67 x 0.2 x 0.2 in/5 x 17 x 5 x 5 mm
Technology	HP Viverna pigment inks, HP Three-Black ink set, HP Embedded Spectrophotometer
Ink cartridge colors	light cyan, light magenta, light gray, photo black, cyan, magenta, yellow, matte black
Ink types	HP Viverna pigment inks
Ink drop	4 pl (light cyan, light magenta, light gray, photo black), 6 pl (cyan, magenta, yellow, matte black)
Ink cartridge size	130 ml ink cartridges (69 ml introductory ink cartridges included in 24" printer box, not available as replacement cartridges); 130 ml Ink Cartridge Twin Packs also available
Nozzles	2 colors per printhead, 1056 nozzles per color
Maximum print length	300 ft/91 m (OS and application dependent)
Line accuracy	+/- 0.2 % ⁴
Lightfastness	Over 200 years ⁵ fade resistance
Water resistance	Water-resistant on a range of HP creative and specialty media
Connectivity	Standard: One 10/100 BT Ethernet, One USB 2.0 high-speed certified port, One EIO Jetdirect accessory slot Optional: HP Jetdirect EIO print servers Standard: HP PCL3GUI Optional: PS via optional software RIP, HP-GL2/RTL optional software solution
Print Languages	
Image quality	
Color accuracy	Median <1.6 dE2000, 95% of colors <2.8 dE2000 ⁵
Short term color stability	<1 dE2000 in less than 5 minutes ⁶
Long term print-to-print repeatability	Average <0.5 dE2000, 95% of colors <1.4 dE2000 ⁶
Maximum optical density	4 L* / 2.4 D ⁷

(4) +/- 0.2% of the specified vector length or +/- 0.1 mm (whichever is greater) at 23°C (73°F), 50-60% relative humidity, on E/A0 printing material in Best or Normal mode with HP Matte Film roll feed

(5) ICC absolute colorimetric accuracy on HP Proofing Matte paper

(6) With HP Premium Instant Dry Photo Satin media, right after calibration

(7) With HP Premium Instant Dry Photo Gloss media

(8) Replacement ink cartridges available are HP 70 130 ml Ink Cartridges and HP 70 130 ml Ink Cartridge Twin Packs. For more information, visit www.hp.com/go/pageyield

Environmental ranges	
Operating temperature	41 to 104°F/5 to 40°C
Recommended operating temperature	59 to 95°F/15 to 35°C
Storage temperature	-13 to 131°F/-25 to 55°C
Recommended operating humidity	20 to 80% RH
Recommended storage humidity	0 to 95% RH
Acoustic	
Sound pressure, active	44 dB(A)
Sound pressure, standby	29 dB(A)
Sound power, active	6.5 B(A)
Sound power, standby	4.4 B(A)
Power consumption	
Active	200 watts
Maximum	200 watts
Powersave	27 watts
Standby	43 watts
Power requirements	Input voltage auto-ranging 100 to 240 VAC (+/- 10%), 50/60Hz (+/- 3 Hz), 2 Amp max
Certification	
Safety	IEC 60950-1 compliant, EU LVD and EN 60950-1 compliant, certified by CSA for Canada and US, Argentina IRAM, Singapore PSB, Russia GOST, China CCCB, Taiwan BSMI
Electromagnetic	Compliance for Class B products: EU (EMC Directive), USA (FCC rules), Canada (DoC), Australia (ACA), New Zealand (MoC), China (CCC), Japan (VCCI), Korea (MIC) and Taiwan (BSMI)
Energy Star® compliant	Yes
Press standard	100% coverage of SWOP, ISO and GRACOL, and 3DAP

Warranty 1 year warranty with on-site, next business-day service

Warranty extensions UF028PA/PE HP 1yr Post Warranty Next-Business-Day Onsite Service

Care Packs UF017A/E HP 3yr Next-Business-Day Onsite Service
UF018A/E HP 4 yr Next-Business-Day Onsite Service
UF019A/E HP 5 yr Next-Business-Day Onsite Service
H7604A/E HP Installation Service
H4518A/E HP Installation with network configuration

Color Services UF050A/E 1yr/5 cases HP Color Expert Service (HP Color Expert Service available in US and Europe only. In Europe, check for availability in your country)

More information on products, technologies and services available at www.hp.com/go/graphic-arts

Recommended system requirements	
Macintosh	Mac OS X v10.2, v10.3, v10.4 and later, PowerPC G4, G5, or Intel Core Processor, 1 GB RAM, 2 GB available hard disk Microsoft Windows XP or 2000: Pentium IV, 3 GHz, 1GB RAM, 2 GB available hard disk
Windows	
Dimensions (w x d x h)	
Printer with stand	HP Designjet Z2100 24" Photo Printer: 49.7 x 26 x 41.2 in 1262 x 661 x 1047 mm HP Designjet Z2100 44" Photo Printer: 69.7 x 26 x 41.2 in 1770 x 661 x 1047 mm
Shipping Dimensions	HP Designjet Z2100 24" Photo Printer: 57.8 x 30.7 x 29.1 in (NA, LAR, EMEA) 1470 x 780 x 740 mm (NA, LAR, EMEA) 65.35 x 30.3 x 23.2 in (AP) 1660 x 770 x 590 mm (AP) HP Designjet Z2100 44" Photo Printer: 77.3 x 30.7 x 30.7 in 1965 x 780 x 780 mm
Weight	
Printer with stand	HP Designjet Z2100 24" Photo Printer: 143 lb/65 kg HP Designjet Z2100 44" Photo Printer: 189 lb/86 kg
Shipping weight	HP Designjet Z2100 24" Photo Printer: 225 lb/102 kg (NA, LAR, EMEA) 195 lb/88.5 kg (AP) HP Designjet Z2100 44" Photo Printer: 271 lb/123 kg

What's in the box
HP Designjet Z2100 24" Photo Printer: spindle, printheads (4 x 2 colors), ink cartridges (8 x 69 ml)⁸, media high gloss photo sample roll (24 in x 15 ft), stand (24")*, rear tray (24"), adaptor 3" KIT for spindle (2), quick reference guide, set-up poster, USB cable, power cord, HP Start-up kit including printer software and training
HP Designjet Z2100 44" Photo Printer: spindle, technical spindle, printheads (4 x 2 colors), ink cartridges (8 x 130 ml), media high gloss photo sample roll (36" x 15 ft), stand (44"), rear tray (44"), 3" KIT for spindle (2), quick reference guide, set-up poster, USB cable, power cord, HP Start-up kit including printer software and training

* Stand not included in the box in Asia Pacific for 24" model

Ordering information

Product
Q6675A HP Designjet Z2100 24" Photo Printer
Q6675B HP Designjet Z2100 GP 24" Photo Printer (EMEA only. Includes HP Advanced Profiling Solution)
Q6677A HP Designjet Z2100 44" Photo Printer

Accessories
Q6643D EFI Designer 5.1 for HP XL International
Q6644D EFI Designer 5.1 for HP XL Japan
Q6663A HP Designjet Z2100 24 inch stand (available only in AP for 24" printer)
Q6692B HP GL/2 Upgrade Kit for the HP Designjet Z2100/Z3100 Photo series
Q6695A HP Advanced Profiling Solution International
Q6701A HP Advanced Profiling Solution Japan and Asia Pacific
Q6698A HP Designjet Z2100 44 inch Spindle for printing on technical media
Q6699A HP Designjet Z2100 44 inch Spindle for graphics (spare spindle for easy media switching)
Q6700A HP Designjet Z2100 24 inch Spindle for graphics (spare, for easy media switching)

Printing supplies
Printheads
C9404A HP 70 Matte Black & Cyan Printhead
C9405A HP 70 Light Magenta & Light Cyan Printhead
C9406A HP 70 Magenta & Yellow Printhead
C9407A HP 70 Photo Black & Light Gray Printhead
130 ml ink cartridges
C9448A HP 70 Matte Black 130 ml Ink Cartridge
C9449A HP 70 Photo Black 130 ml Ink Cartridge
C9451A HP 70 Light Gray 130 ml Ink Cartridge
C9452A HP 70 Cyan 130 ml Ink Cartridge
C9453A HP 70 Magenta 130 ml Ink Cartridge
C9454A HP 70 Yellow 130 ml Ink Cartridge
C9455A HP 70 Light Magenta 130 ml Ink Cartridge
C9390A HP 70 Light Cyan 130 ml Ink Cartridge

Ink cartridge twin packs
CB339A HP 70 Matte Black 130 ml Ink Cartridge Twin Pack
CB340A HP 70 Photo Black 130 ml Ink Cartridge Twin Pack
CB342A HP 70 Light Gray 130 ml Ink Cartridge Twin Pack
CB343A HP 70 Cyan 130 ml Ink Cartridge Twin Pack
CB344A HP 70 Magenta 130 ml Ink Cartridge Twin Pack
CB345A HP 70 Yellow 130 ml Ink Cartridge Twin Pack
CB346A HP 70 Light Magenta 130 ml Ink Cartridge Twin Pack
CB351A HP 70 Light Cyan 130 ml Ink Cartridge Twin Pack

Media supplies
Q7991A HP Premium Instant-Dry Gloss Photo Paper 24 in x 75 ft/610 mm x 22.9 m
Q7992A HP Premium Instant-Dry Satin Photo Paper 24 in x 75 ft/610 mm x 22.9 m
Q6626A HP Super Heavyweight Plus Matte Paper 24 in x 100 ft/610 mm x 30.5 m
C6029C HP Heavyweight Coated Paper 24 in x 100 ft/610 mm x 30.5 m
C6775A HP Colorfast Adhesive Vinyl 36 in x 40 ft/914 mm x 12.2 m
Q1898B HP Opaque Scrim 36 in x 50 ft/914 mm x 15 m
C6787A HP Banners with Tyvek® 36 in x 50 ft/914 mm x 15 m
Q7973A HP Matte Litho-realistic Paper 36 in x 100 ft/914 mm x 30.5 m
US, EMEA only
Q8663A HP Professional High-gloss Contract Proofing Paper 24 in x 100 ft/610 mm x 30.5 m
Q7971A HP Professional Semi-gloss Contract Proofing Paper 24 in x 100 ft/610 mm x 30.5 m
Q1968A HP Proofing Matte 24 in x 100 ft/610 mm x 30.5 m
Q8732A HP Hahnemühle Smooth Fine Art Paper 265 g/m² 24 in x 35 ft/610 mm x 10.7 m
Q8736A HP Hahnemühle Textured Fine Art Paper 265 g/m² 24 in x 35 ft/610 mm x 10.7 m
Q1984A HP Hahnemühle Watercolor Paper 36 in x 38 ft/914 mm x 11.58 m
Q8741A HP Aquarella Art Paper 24 in x 35 ft/610 mm x 10.7 m

More HP media sizes and weights available at www.hp.com/go/designjet/supplies